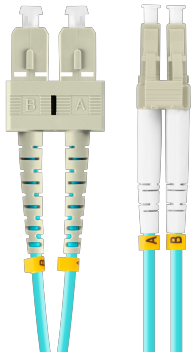
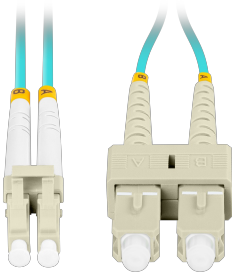
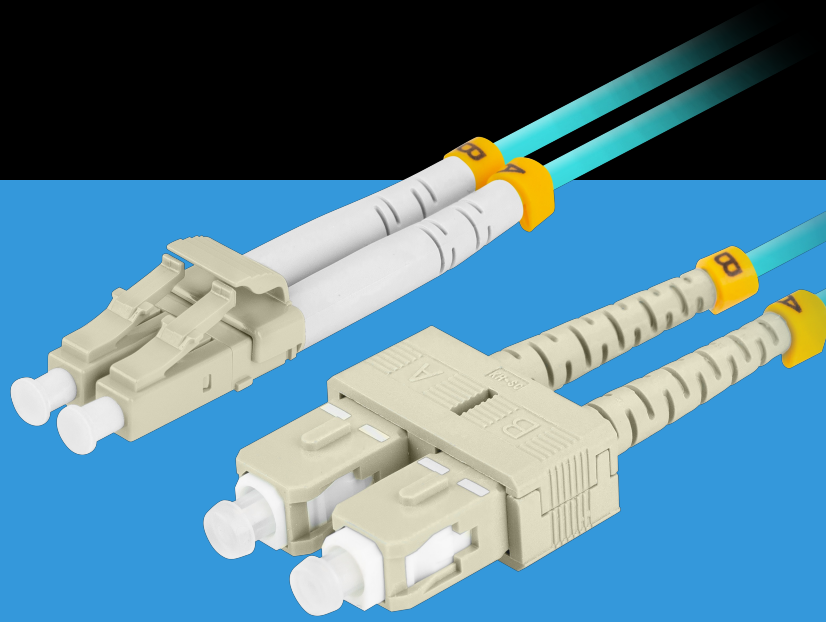


FO-LUSU-MD31-0005-TQ

# FIBER OPTIC PATCHCORD



## PRODUCT FEATURES:

- Low attenuation of connectors
- Repeatability of transmission parameters
- High bending radius
- Product compliance with IEC/ISO standards
- LSZH (Low Smoke Zero Halogen) outer coating

## PRODUCT SPECIFICATION:

|                         |                      |
|-------------------------|----------------------|
| Connectors              | LC, SC               |
| Cable length            | 50 cm                |
| Polishing standard      | UPC                  |
| Fiber optic type        | OM3                  |
| Fiber Type              | Multi-Mode           |
| Fiber diameter          | 50/125               |
| Cable Construction      | Duplex               |
| Cable diameter          | 3 mm                 |
| Coating material        | LSZH                 |
| Insertion loss          | 0,2 dB               |
| Return loss             | 35 dB                |
| Environment temperature | from -40 up to 85 °C |
| Minimum bend radius     | 7,5                  |
| Colour                  | Turquoise            |